



KAMAZ

Publicly
Traded
Company

REPAIR AND TOOL MAKING PLANT

Spare part production

Sufficient quantity of high resolution general-purpose and special-purpose equipment makes it possible for us to produce a wide range of spare parts and tooling for entire production cycle manufacturing equipment – from casting (forging) to heat treatment (painting) of finished products including all kinds of machining.





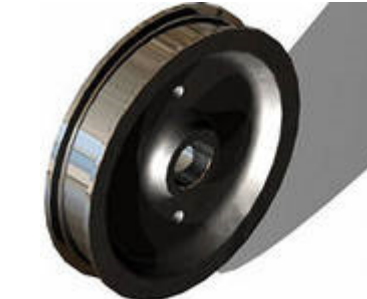
PRODUCTION OF SPARE PARTS

- Spur wheel drives, disks (external and internal gearing)
- Worm gear drives
- Bevelled wheels (with straight and circle-arc tooth)
- Toothed bars
- Chain gears
- Shafts, plungers, rods
- Recirculating ball screw-and-nut
- Rollers
- Flanges
- Case-shaped parts
- Spindles, spindle units
- Springs
- Split spring bushing
- Crane wheel facing
- Frame clips – 600mm*600mm*120mm
- Manufacture and repair of vibrators for casting and moulding lines
- Manufacture hauling chains



PRODUCTION OF SPARE PARTS

- Reference wheels
- Screw feeds
- Spool valves
- Cutters
- Rotor shafts
- Pneumatic drives
- Sliding bars
- Punches
- Balance beams
- Dies
- Shifting mechanisms
- Trolleys
- Screwdrivers
- Assembly units
- Parts based on the customer drawings, etc.



Spare parts for manufacturing equipment used for foundry overhead conveyors




Push tooth	Upgrade of vertical head
Expansion joint	Trolley (head, intermediate, rear)
Bearing – running roller	Chain (track, hauling)
Bogie	



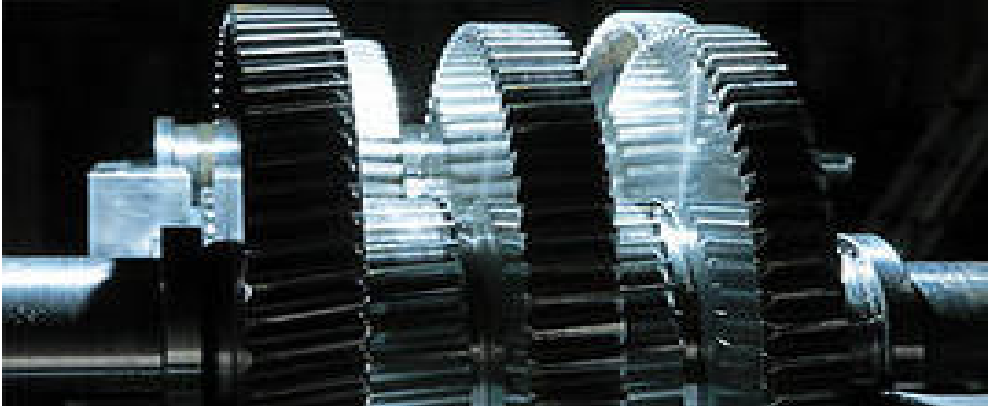


SPARE PARTS FOR AUTOMATIC MOULDING LINE



Conveyor roller	Roller (drive, supporting, idling flanged, smooth, carrying)
Axis assembly	Ripper
Foundry conveyor housing	Aerator chain gear (chain gear unit)
Platform	Ground cutter
Synchronizing stop block	Pusher
Roof hood	Broacher rod
Aerator shaft	

Gripping mechanism (K, K1)	 
Grapple linkage	
Movable spragger mechanism	
Axis	
Aerator pinion	
Synchronizing stop block	Bogie rail
Roof hood	Bogie roller (R, R1roller)
Rocker arm	Column (A, A1, R, R1)
Rod	PK bushing
Pulley assembly	Roller frame W
	Measuring pocket blinds
	Roller battery (A, A1)
	Turnover device stop block N 360
	Tilting lever unit
	Bearing unit

 	Filler roller
	Foundry conveyor chain element
	Five cam chain (four cam)
	Chain gear
	Mixture gate blinds
Grid (gate bar)	Scraper frame
Axis assembly	Gripping mechanism 1PK
Platform	Rail with RP
Key mounting	Vent plate column
Screw	Drilling tool drive unit
Cranks	
Shaft	
Shaker	
Shuttle rail	
Pin	
Housing	

Contact details:

Head of marketing and contracts department

Alexandra Yu. Gays

Phone: (8552)37-15-55, fax: (8552) 37-24-15

E-mail: GaysAYu@kamaz.ru; marketing_riz@kamaz.ru